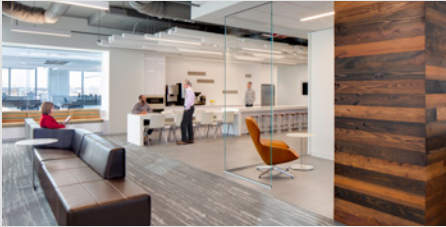


# SMITHGROUP JJR Platinum

LEED Certified Projects  
170 as of 4/24/18



**Baltimore Headquarters**  
Exelon Corporation  
LEED-CI, v3.0, 2017  
473,313 SF



**S.J. Quinney College of Law**  
University of Utah  
LEED-NC, v3.0, 2016  
155,000 SF



**Science & Engineering Building 2**  
University of California, Merced  
LEED-NC, v3.0, 2015  
101,900 SF



**Brock Environmental Center**  
Chesapeake Bay Foundation  
LEED-NC, v3.0, 2015  
10,000 SF



**Washington, DC office**  
SmithGroupJJR  
(1700 New York Avenue)  
LEED-CI, v3.0, 2015  
35,000 SF



**Energy Systems Integration Facility**  
National Renewable Energy  
Laboratory  
LEED-NC, v2.2, 2013  
182,500 SF



**Human Health Building**  
Oakland University  
LEED-NC, v2.2, 2013  
160,260 SF



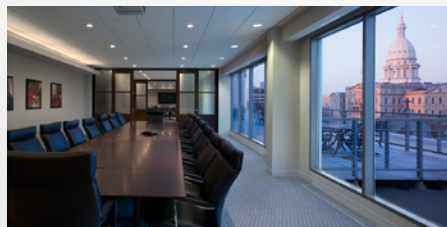
**Washington, DC office**  
SmithGroupJJR  
(901 K Street)  
LEED-CI, v3.0, 2013  
35,000 SF



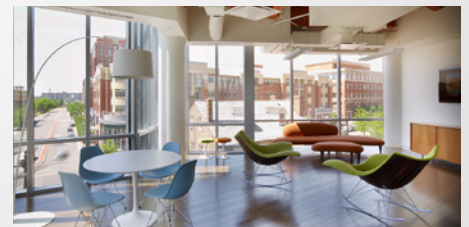
**Phoenix office**  
DPR Construction  
LEED-NC, v3.0, 2012  
16,366 SF



**School of Education Renovation**  
University of Wisconsin Madison  
LEED-NC, v2.2, 2011  
With HGA  
107,000 SF



**The Christman Building**  
The Christman Company  
LEED-EBO&M, 2010



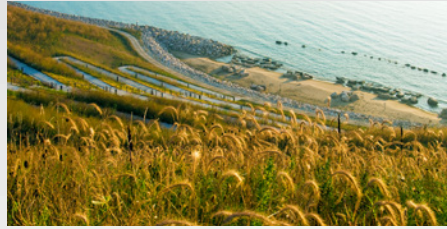
**Corporate Headquarters**  
The Burgess Group  
LEED-CI, v3.0, 2010  
16,000 SF

# SMITHGROUP JJR Platinum

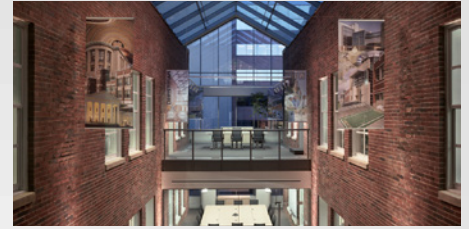
LEED Certified Projects  
170 as of 4/24/18



**1200 19<sup>th</sup> Street, NW**  
Hines  
LEED-CS, v2.0, 2010  
337,000 SF



**Center for Environmental Stewardship**  
Concordia University  
LEED-NC, v2.2, 2009, 13,365 SF  
With Groth Design Group



**The Christman Building**  
The Christman Company  
LEED-CI, v2.0, 2008



**The Christman Building**  
The Christman Company  
LEED-CS, v2.0, 2008  
64,190 SF



**The Home Depot Smart Home**  
Duke University  
LEED-NC, v2.1, 2008  
With Frank Harmon Architects  
5,621 SF



**Science and Technology Facility**  
National Renewable Energy  
Laboratory  
LEED-NC, v2.1, 2007  
71,000 SF



**Philip Merrill Environmental Center**  
Chesapeake Bay Foundation  
LEED-NC, v1.0, 2000  
32,000 SF

# SMITHGROUP JJR

# Gold

LEED Certified Projects  
170 as of 4/24/18



**The Wharf DC**  
Canopy by Hilton & Hyatt House  
LEED-NC (2009)  
300,000 SF



**Restoration Institute Graduate Education Center**  
Clemson University  
LEED-NC, v3.0, 2018  
50,000 SF



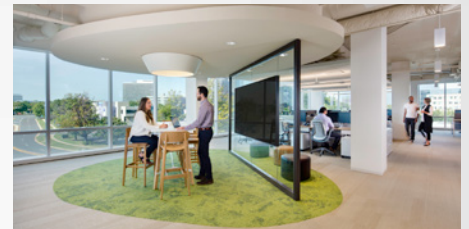
**Headquarters Renovation**  
Noblis, Inc.  
LEED-CI, v3.0, 2017  
160,000 SF



**College of Law**  
Georgia State University  
LEED-NC, v3.0, 2017  
206,000 SF



**Anne Arundel Hall**  
St. Mary's College of Maryland  
LEED-NC, v3.0, 2017  
39,614 SF



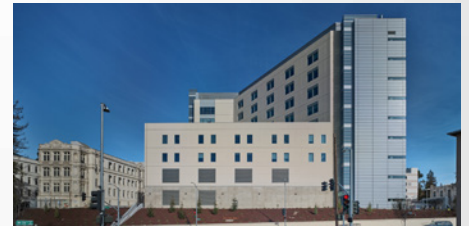
**USA Headquarters**  
Transurban  
LEED-CI, v3.0, 2017  
15,000 SF



**Washington College of Law**  
American University  
LEED-NC, v3.0, 2017  
312,000 SF



**National Harbor Resort and Casino**  
MGM  
LEED-NC, v3.0, 2016  
With HKS  
3.2 million SF



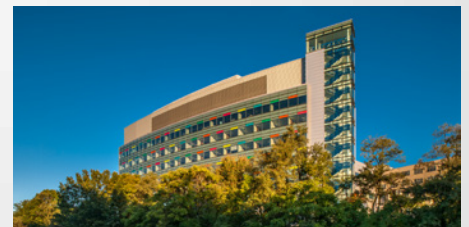
**Highland Hospital Acute Tower Replacement**  
Alameda County  
LEED-NC, v2.2, 2016  
395,000 SF



**Champions Hall**  
University of Arkansas Fayetteville  
LEED-NC, v3.0, 2016  
67,277 SF



**Chu Hall**  
University of California/Lawrence Berkeley National Laboratory  
LEED-NC, v3.0, 2016  
39,000 SF



**Holy Cross Silver Spring Hospital, New Bed Tower**  
Holy Cross Health System  
LEED-NC, v2.2, 2016  
232,000 SF

# SMITHGROUP JJR

# Gold

LEED Certified Projects  
170 as of 4/24/18



**Engineering Building**  
Oakland University  
LEED-NC, v3.0, 2016  
134,200 SF



**Helen Diller Family Cancer Research Building 4<sup>th</sup> Floor Renovation**  
University of California San Francisco  
LEED-ID+C, v3.0, 2016  
20,400 SF



**City of Detroit Public Safety Headquarters**  
Detroit Building Authority  
LEED-NC, v3.0, 2016  
400,000 SF



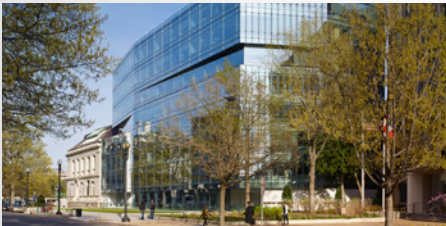
**Holy Cross Germantown Hospital**  
Holy Cross Health  
LEED-NC, v2.2, 2015  
237,000 SF



**Advanced Protein Characterization Facility**  
Argonne National Laboratory  
LEED-NC, v2.2, 2014  
60,000 SF



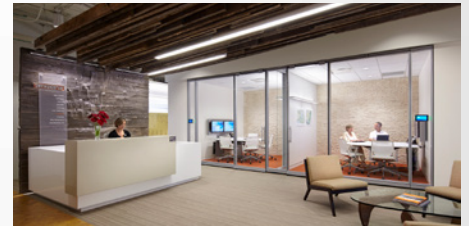
**Arthur A. Dugoni School of Dentistry**  
University of the Pacific  
LEED-NC, v2.0, 2014  
395,000 SF



**1700 New York Avenue, NW**  
Carr Properties  
LEED-CS, v3.0, 2014  
120,000 SF



**Center for Entrepreneurial Leadership**  
GateWay Community College  
LEED-NC, v3.0, 2014  
18,600 SF



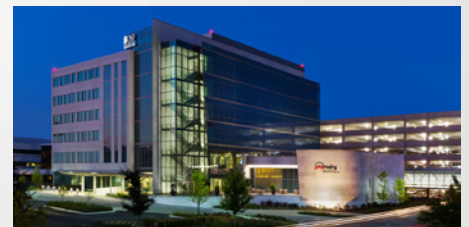
**Madison, Wisconsin Office**  
SmithGroupJJR  
LEED-CI, v3.0, 2014  
7,300 SF



**Integrated Education Building**  
GateWay Community College  
LEED-NC, v3.0, 2014  
130,355 SF



**Student Services Center and Campus Operations Building**  
Kishwaukee College  
LEED-NC, 2014



**Jump Trading Simulation & Education Center**  
OSF Saint Francis Medical Center  
LEED-NC, v2.0, 2013  
168,000 SF

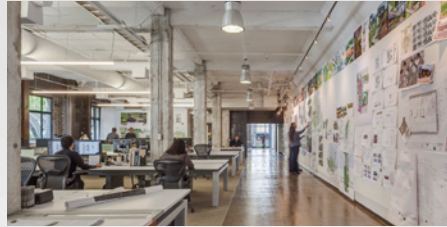
# SMITHGROUP JJR

# Gold

LEED Certified Projects  
170 as of 4/24/18



**Cancer Center**  
Sibley Memorial Hospital  
LEED-NC, v3.0, 2013  
40,000 SF



**San Francisco Office**  
SWA Group  
LEED-CI, v3.0, 2013  
6,400 SF



**Chandler City Hall**  
City of Chandler, Arizona  
LEED-NC v2.2, 2013  
137,000 SF



**Utah Campus**  
eBay  
LEED-NC, v3.0, 2013  
240,000 SF



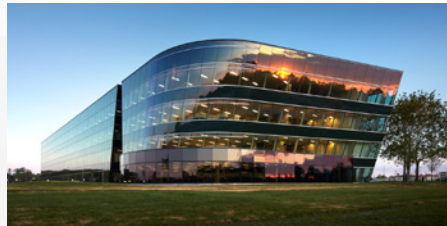
**New U.S. Headquarters**  
Astellas Pharma US  
LEED-CI, v2.0, 2013  
420,000 SF



**Centennial Hall**  
University of Wisconsin, La Cross  
LEED-NC, v3.0, 2012  
With River Architects  
188,570 SF



**100 K Consolidated Building**  
Internal Revenue Service  
LEED-NC, v3.0, 2012  
115,000 SF



**Sterling Heights Facility**  
BAE Systems  
LEED-NC, v2.2, 2012  
219,000 SF



**Smith Cardiovascular Research Building**  
University of California San Francisco  
LEED-NC, v2.2, 2012  
232,000 SF



**Agricultural Research Center**  
New Mexico State University  
LEED-NC, v3.0, 2012  
With Studio SW  
3,200 SF



**Technology Building**  
Los Angeles Harbor College  
LEED-NC, v2.2, 2011  
60,000 SF



**Institute for Critical Technology and Applied Science II**  
Virginia Polytechnic Institute and State University  
LEED-NC, v2.2, 2011, 42,190 SF

# SMITHGROUP JJR

## Gold

LEED Certified Projects  
170 as of 4/24/18



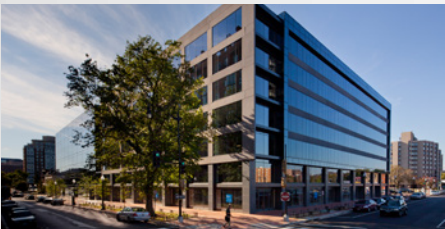
**Constitution Center**  
David Nassif Associates  
LEED-CS, v2.0, 2011  
2.1 million SF



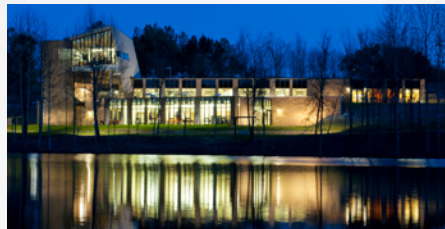
**Portland Practice Offices**  
Deloitte  
LEED-CI, v3.0, 2011  
17,431 SF



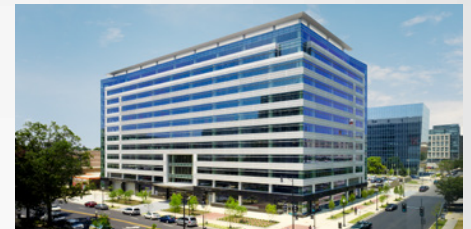
**Roy and Dagmar Dolby  
Regeneration Medicine Building**  
University of California, San Francisco  
LEED-NC, v2.2, 2011  
68,500 SF



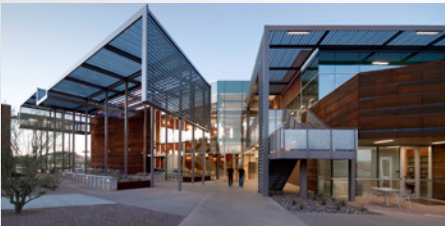
**425 Eye Street, NW**  
Paramount Group  
LEED-CS, v2.0, 2011  
400,000 SF



**Sandhill Research and Education  
Center**  
Clemson University  
LEED-NC, v2.1, 2011, 15,170 SF  
With Neal Prince + Partners



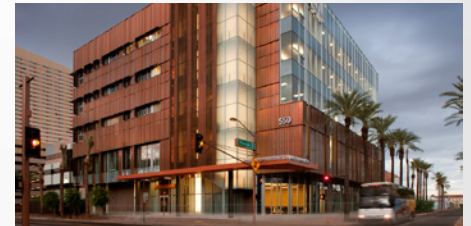
**90 K Street, Phase One**  
Trammell Crow Company  
LEED-CS, v2.0, 2010  
401,800 SF



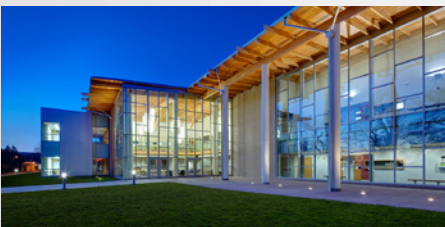
**Saguro Building**  
Mesa Community College,  
Red Mountain Campus  
LEED-NC, v2.2, 2010  
42,870 SF



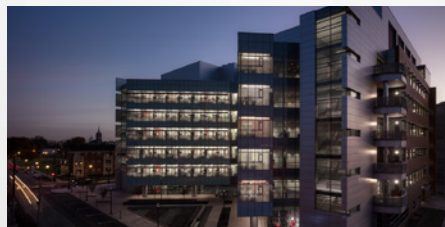
**School of Law**  
Villanova University  
LEED-NC, v2.2, 2010  
175,000 SF



**College of Nursing and Health  
Innovation Phase II - Arizona State  
University**  
City of Phoenix  
LEED-NC, v2.2, 2010, 80,000 SF



**The Franciscan Center**  
Madonna University  
LEED-NC, v2.2, 2010  
60,000 SF



**Clinical and Translational Research  
Building**  
University of Louisville  
LEED-NC, v2.2, 2010  
287,970 SF



**Portage Lakefront and Riverwalk**  
City of Portage, Indiana  
LEED-NC, v2.2, 2010  
With Design Organization  
7,700 SF

# SMITHGROUP JJR

## Gold

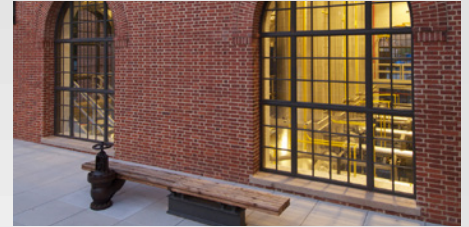
LEED Certified Projects  
170 as of 4/24/18



**901 K Street NW**  
Carr Realty Partners  
LEED-CS, v2.0, 2010  
280,000 SF



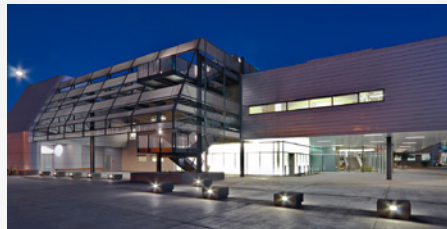
**San Diego Practice Offices**  
Deloitte  
LEED-CI, v2.0, 2010  
28,078 SF



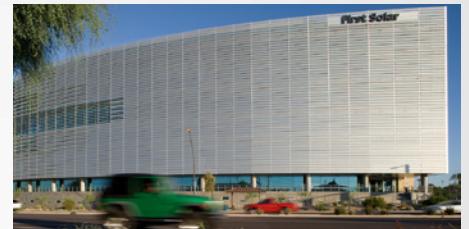
**East Campus Steam Plant**  
Duke University  
LEED-NC, v2.2, 2010  
6,341 SF



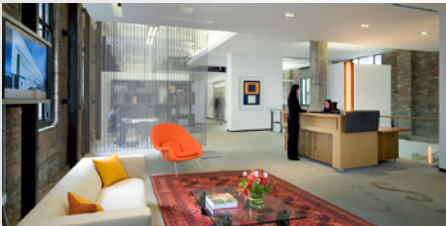
**French Family Science, Math and Technology Center**  
Ursuline Academy of Dallas  
LEED for Schools, 2009  
69,470 SF



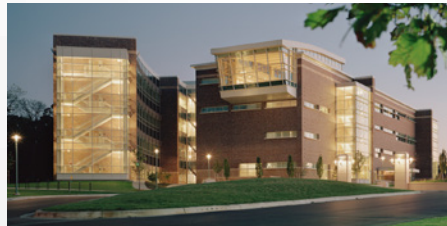
**Physical Science Building**  
Mesa Community College  
LEED-NC, v2.2, 2009  
62,000 SF



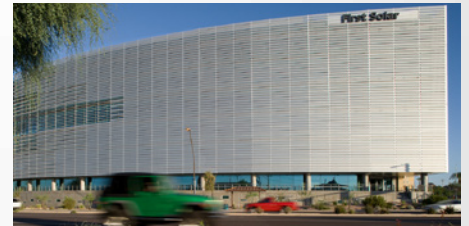
**First Solar Tenant Improvement, Papago Gateway Center**  
Chestnut Properties, LLC  
LEED-CI, v2.0, 2009  
34,500 SF



**San Francisco Offices**  
SmithGroup  
LEED-CI, v2.0, 2009  
36,000 SF



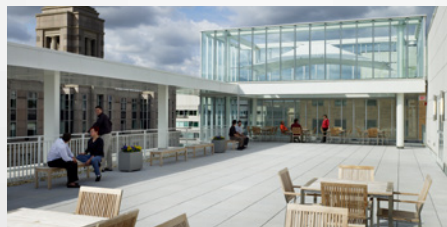
**College of Health and Human Services**  
Western Michigan University  
LEED-EBO&M, v3.0, 2009  
196,000 SF



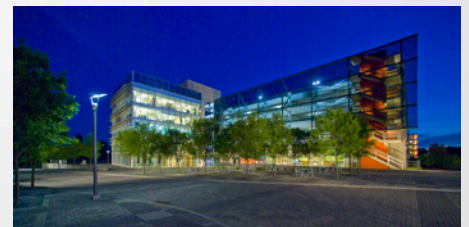
**Papago Gateway Center**  
Chestnut Properties, LLC  
LEED-CS, v2.0, 2009  
267,000 SF



**Corporate Headquarters**  
Sundt Construction  
LEED-NC, v2.2, 2009  
68,000 SF



**1331 L. Street Building**  
DRI Development Services  
LEED-CS, v2.0, 2009  
170,000 SF



**Administrative Building and Parking Garage**  
Clemson University International Center for Automotive Research  
LEED-NC, v2.1, 2009, 415,000 SF  
With Neal Prince + Partners

# SMITHGROUP JJR

# Gold

LEED Certified Projects  
170 as of 4/24/18



**Arizona Biomedical Collaborative — Building #1**  
Arizona Biomedical Collaborative  
LEED-NC, v2.1, 2009  
85,069 SF



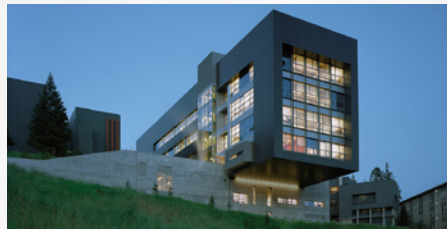
**Denver Offices**  
Parsons Brinckerhoff  
LEED-CI, v2.0, 2008  
45,000 SF



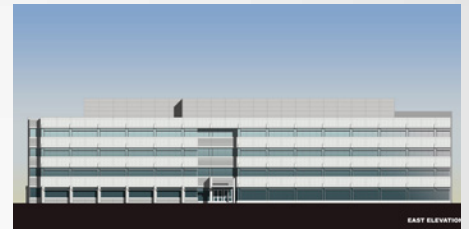
**Weiboldt Hall School of Continuing Studies**  
Northwestern University  
LEED-CI, v2.0, 2008  
31,000 SF



**College of Engineering and Natural Sciences**  
Northern Arizona University  
LEED-NC, v2.1, 2007  
90,000 SF



**Molecular Foundry**  
Lawrence Berkeley National Laboratory  
LEED-NC, v2.1, 2007  
96,000 SF



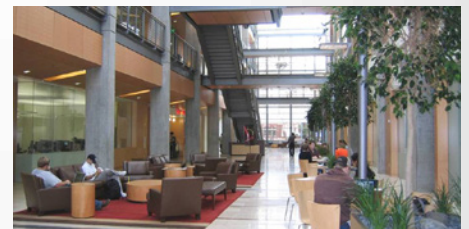
**Cedar Knolls Development National Business Park 318**  
Corporate Office Properties Trust  
LEED-CS Pilot, 2007  
125,000 SF



**Cedar Knolls Development National Business Park 322**  
Corporate Office Properties Trust  
LEED-CS Pilot, 2007  
125,000 SF



**Cedar Knolls Development National Business Park 320**  
Corporate Office Properties Trust  
LEED-CS Pilot, 2007  
125,000 SF



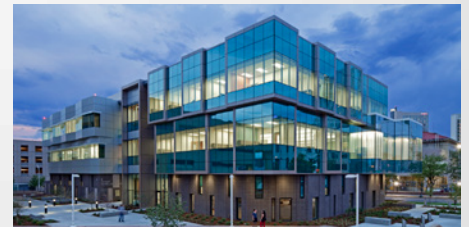
**College of Engineering**  
Oregon State University  
LEED-NC, v2.0, 2006  
*With Yost Grube Hall Architecture*  
153,000 SF



**Health & Wellness Programs F Wing Renovations**  
Delta College  
LEED-NC, v2.0, 2005



**Moss Landing Marine Laboratories**  
San Jose State University  
LEED-EBO&M, v2.0  
59,200 SF



**Denver Police Department Crime Laboratory**  
City and County of Denver, Colorado  
LEED-NC, v2.2  
60,000 SF

# Gold



**Data Center Renovation**

The University of Utah  
LEED-CI, v3.0  
25,000 SF



**CyberInfrastructure Building**

Indiana University  
LEED-NC, v3.0  
134,000 SF



**Energy Biosciences Building**

University of California Berkeley  
LEED-NC, v2.2  
113,200 SF

# SMITHGROUP JJR

## Silver

LEED Certified Projects  
170 as of 4/24/18



**Federal Bureau of Investigations  
Detroit Field Office Build-out &  
McNamara Building Lobby Renovation**  
U.S. General Services Administration  
LEED-CI, v3.0, 2016 490,000 SF



**1227 25<sup>th</sup> 5<sup>th</sup> floor**  
Advisory Board Company DC  
LEED-CI, v3.0, 2016  
490,000 SF



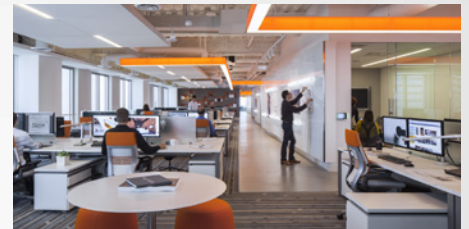
**H Building Renovation**  
The World Bank  
LEED-CI, v3.0, 2016  
490,000 SF



**Dr. Bob Smith Health Center**  
Southern Methodist University  
LEED-HC, v3.0, 2016  
28,000 SF



**Lake Trust Credit Union  
Headquarters**  
Christman Company  
LEED-NC, v3.0, 2016  
100,000 SF



**Los Angeles Office**  
SmithGroupJJR  
LEED-CI, v4.0, 2016  
10,200 SF



**Advocate Illinois Masonic Medical  
Center, Center for Advanced Care**  
Advocate Health Care  
LEED-HC, v3.0, 2016  
162,000 SF



**Dearborn Rail Passenger  
Intermodal Station**  
City of Dearborn, Michigan  
LEED-NC, v2.2, 2015  
24,000 SF



**Wounded Warriors Transitional  
Lodging & Parking Garage**  
NAVFAC Mid Atlantic  
LEED-NC, v3.0, 2015  
139,000 SF



**John D. Dingell Transit Center**  
City of Dearborn, Michigan  
LEED-NC, v2.2, 2015  
16,644



**Bregante & Co**  
Bregante + Company LLP  
LEED-CI, v3.0, 2015  
4,200 SF



**White House Visitor Center**  
White House Historical Association  
LEED-CI, 3.0, 2015  
16,000 SF

# SMITHGROUP JJR

## Silver

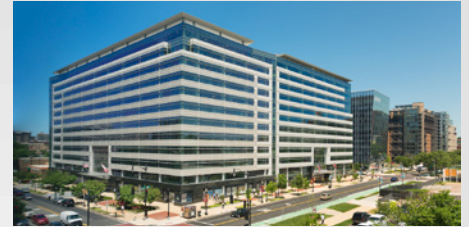
LEED Certified Projects  
170 as of 4/24/18



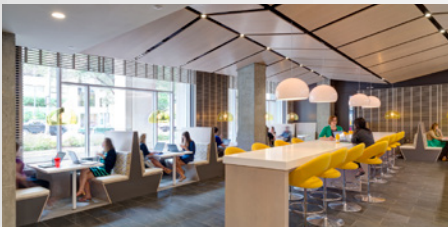
**Nevils Hall Renovation**  
Georgetown University  
LEED-NC, v2.2, 2015  
73,535 SF



**Government Affairs Office**  
United Technologies Corporation  
LEED-CI, v3.0, 2014  
26,000 SF



**Sentinel Square 1050 First Street**  
Trammell Crow Company  
LEED-CS, v3.0, 2014  
300,000 SF



**Washington, DC Expansion Phase II**  
Advisory Board Company  
LEED-CI, v3.0, 2014  
34,000 SF



**Camp Lejeune Hospital Outpatient Clinic, Naval Hospital Renovation and Addition**  
NAVFAC Mid Atlantic  
LEED-NC, v2.2, 2014 262,000 SF



**Hall of Science**  
California State University, Long Beach  
LEED-NC, v3.0, 2014  
164,000 SF



**425 Eye Street Office Interiors**  
U.S. Department of Veterans Affairs  
LEED-CI, v3.0, 2014  
285,000 SF



**San Francisco Practice Offices**  
Deloitte  
LEED-CI, 2.0, 2013  
178,000 SF



**U.S. Department of Homeland Security Interiors**  
U.S. Department of Homeland Security  
LEED-CI, v2.0, 2013 40,000 SF



**U.S. Department of Veterans Affairs Interiors**  
U.S. Department of Veterans Affairs  
LEED-CI, v3.0, 2013  
40,000 SF



**Veterans Affairs 90 K Street**  
Trammell Crow Company  
LEED-CI, v3.0, 2013

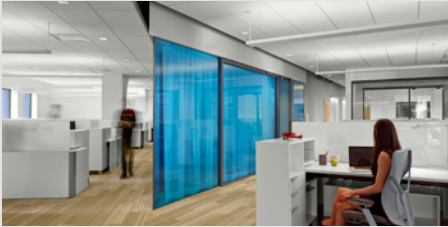


**U.S. Customs and Border Protection Mobile Work Force**  
U.S. Customs and Border Patrol  
LEED-CI, v3.0, 2013  
9,000 SF

# SMITHGROUP JJR

## Silver

LEED Certified Projects  
170 as of 4/24/18



**San Francisco Office**  
Advisory Board Company  
LEED-CI, v3.0, 2013  
9,450 SF



**Good Shepherd Cottage**  
Santa Teresita, Inc.  
LEED-NC, v3.0, 2013  
20,000 SF



**U.S. Parole Commission Interiors**  
U.S. Parole Commission  
LEED-CI, v3.0, 2013  
31,000 SF



**Asset Management Offices' Tenant Improvement**  
Baker Ave  
LEED-CI, 3.0, 2012  
8,000 SF



**TWU Recreation Center**  
Texas Woman's University  
LEED-NC, v3.0, 2012  
40,657 SF



**Health Wellness Building**  
Mesa Community College  
LEED-NC, v2.2, 2011  
38,670 SF



**National Museum of the American Indian Cultural Resources Center**  
Smithsonian Institution  
LEED-EBO&M, 2011  
200,000 SF



**Science & Technology Building**  
Los Angeles City College  
LEED-NC, v2.1, 2011  
85,000 SF



**National Intrepid Center of Excellence**  
Intrepid Fallen Heroes Fund  
LEED-NC, v2.2, 2010  
72,000 SF



**Barbara and David Gibbs Recreation and Wellness Center**  
The Rice University  
LEED-NC, v2.2, 2010  
103,000 SF



**Detroit Headquarters**  
United Way for Southeastern Michigan  
LEED-CI, v2.0, 2010  
47,000 SF



**Chicago Hiring Center 27<sup>th</sup> Floor**  
Sargent & Lundy  
LEED-CI, v2.0, 2010  
37,000 SF

# SMITHGROUP JJR

## Silver

LEED Certified Projects  
170 as of 4/24/18



**Corporate Headquarters**  
The HON Company  
LEED-CI, v2.0, 2010  
70,000 SF



**1775 Pennsylvania Avenue, NW**  
Tishman Speyer  
LEED-CS, v2.0, 2010  
168,000 SF



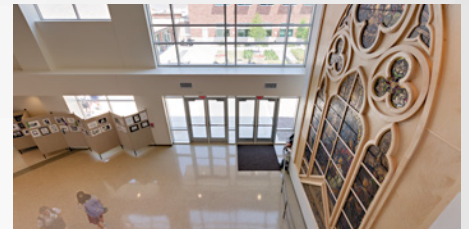
**Ross School of Business**  
University of Michigan  
LEED-NC, v2.1, 2010  
90,000 SF



**Ross School of Business**  
University of Michigan  
LEED-NC, v2.1, 2010  
90,000 SF



**Corporate Offices — Phoenix**  
Sargent & Lundy  
LEED-CI, v2.0, 2009  
15,685 SF



**Ursuline Academy Music Hall**  
Ursuline Academy of Dallas  
LEED for Schools, 2007  
3,480 SF



**The HON Showroom — Chicago**  
The HON Company  
LEED-CI, v2.0, 2009  
8,260 SF



**Corporate Headquarters**  
Easter Seals  
LEED-CI, v2.0, 2009  
28,331 SF



**Citibank Norfolk Call Center**  
Citibank  
LEED-CI, v2.0, 2009  
30,000 SF



**Goodpaster Hall**  
St. Mary's College of Maryland  
LEED-NC, v2.0, 2008  
56,000 SF



**Mission Ridge**  
The Carlyle Group  
LEED-CS Pilot, 2008  
310,000 SF



**Information Commons**  
Loyola University  
LEED-NC, v2.1, 2008  
With Solomon Cordwell Buenz  
69,000 SF

# SMITHGROUP JJR

## Silver

LEED Certified Projects  
170 as of 4/24/18



**La Kretz Hall**  
University of California Los Angeles  
LEED-NC, v2.0, 2006  
20,000 SF



**NSF International Headquarters**  
NSF International  
LEED-NC, v2.1, 2008  
53,450 SF



**Microsoft Innovation and Policy Center**  
Microsoft Corporation  
LEED-CI, v2.0, 2012  
19,219 SF



**Loyola Alumni Student Center**  
Loyola University Chicago  
LEED-NC, v2.1  
105,911 SF

# SMITHGROUP JJR Certified

LEED Certified Projects  
170 as of 4/24/18



## McLean Practice Offices

Deloitte LLC  
LEED-CI, v3.0, 2016  
85,000 SF



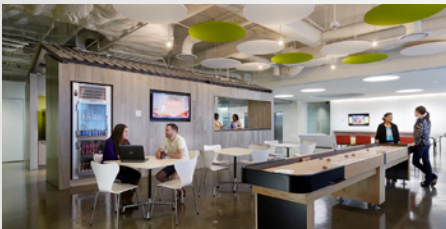
## Diamond View III

Capitol Broadcasting Company  
LEED-CS, v3.0, 2016  
135,697 SF



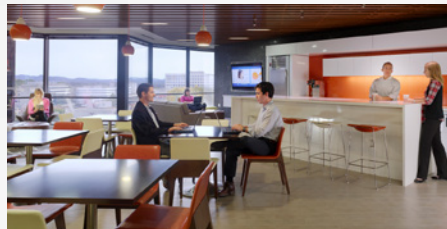
## Culinary Arts

College of DuPage  
LEED-NC, 2015



## Advisory Board Company Austin Phase 2

The Advisory Board Company  
LEED-CI, v3.0, 2015



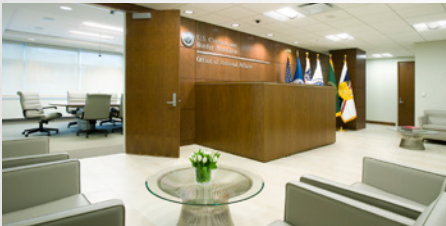
## Advisory Board Company Nashville

The Advisory Board Company  
LEED-CS, v2.0, 2015  
19,500 SF



## Washington, DC Expansion Phase I

Advisory Board Company  
LEED-CI, v3.0, 2013  
36,000 SF



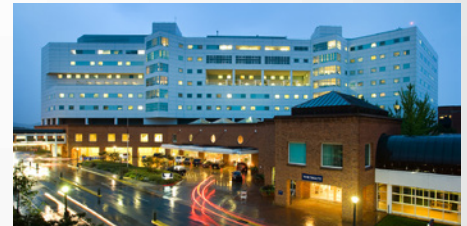
## U.S. Customs and Border Patrol Interiors

U.S. Customs and Border Patrol  
LEED-CI, v3.0, 2013  
73,000 SF



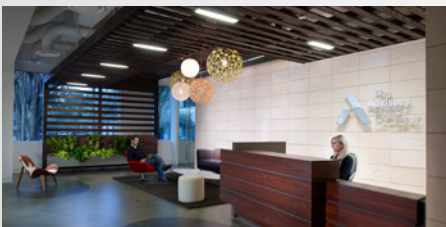
## Cuneo Hall

Loyola University Chicago  
*with Solomon Cordwell Buenz*  
LEED-NC, v2.2, 2012  
65,515 SF



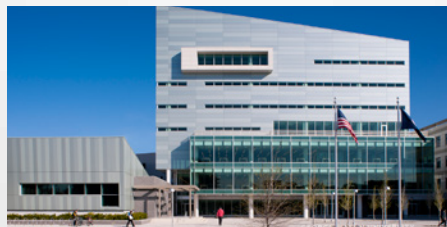
## Patient Tower Expansion

University of Virginia Health System  
LEED-NC, v2.2, 2012  
127,000 SF



## Austin, Texas Office

The Advisory Board Company -  
Crimson  
LEED-CI, v2.0, 2012  
47,000 SF



## Founders Hall

George Mason University  
LEED-NC, v2.2, 2012  
415,700 SF



## Deloitte Services, LLP - San Jose Site

Deloitte  
LEED-CI, v3.0, 2011  
10,000 SF

# SMITHGROUP JJR Certified

LEED Certified Projects  
170 as of 4/24/18



**Deloitte Services LLP San Jose Innovation Center**  
Deloitte  
LEED-CI, v3.0, 2011  
10,000 SF



**Government Relations Office**  
The Walt Disney Company  
LEED-CI, v2.0, 2009  
5,298 SF



**Minneapolis Offices**  
SmithGroup  
LEED-CI, v2.0, 2009  
5,500 SF



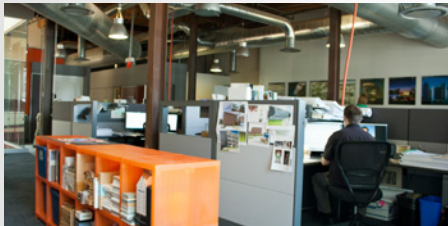
**Chinatown Branch Office**  
Citibank  
LEED for Retail, 2009  
5,000 SF



**James Lee Sorenson Language and Communication Center**  
Gallaudet University  
LEED-NC, v2.1, 2009  
87,000 SF



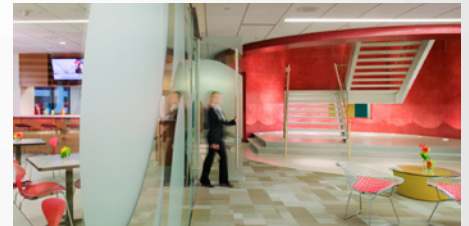
**World Headquarters**  
Visteon Corporation  
LEED-NC, v2.0, 2008  
1,010,000 SF



**Durham Offices**  
SmithGroup  
LEED-CI, v2.0, 2008  
2,000 SF



**San Francisco Office**  
NAI BT Commercial  
LEED-CI, v2.0, 2008  
12,688 SF



**Headquarters**  
Bowman and Brooke LLP  
LEED-CI, v2.0, 2007  
57,000 SF



**Detroit Lions Training Facility and Headquarters**  
JM Olson Corporation  
LEED-NC, v2.0, 2002  
With Gensler 205,000 SF



**Central Supply Facility**  
Argonne National Laboratory  
LEED-NC, v1.0, 2002  
20,000 SF



**U.S. Navy Bachelors Enlisted Quarters**  
NAVFAC Washington, DC  
LEED-NC, v1.0, 2000  
With WIGHT Co. 365,000 SF