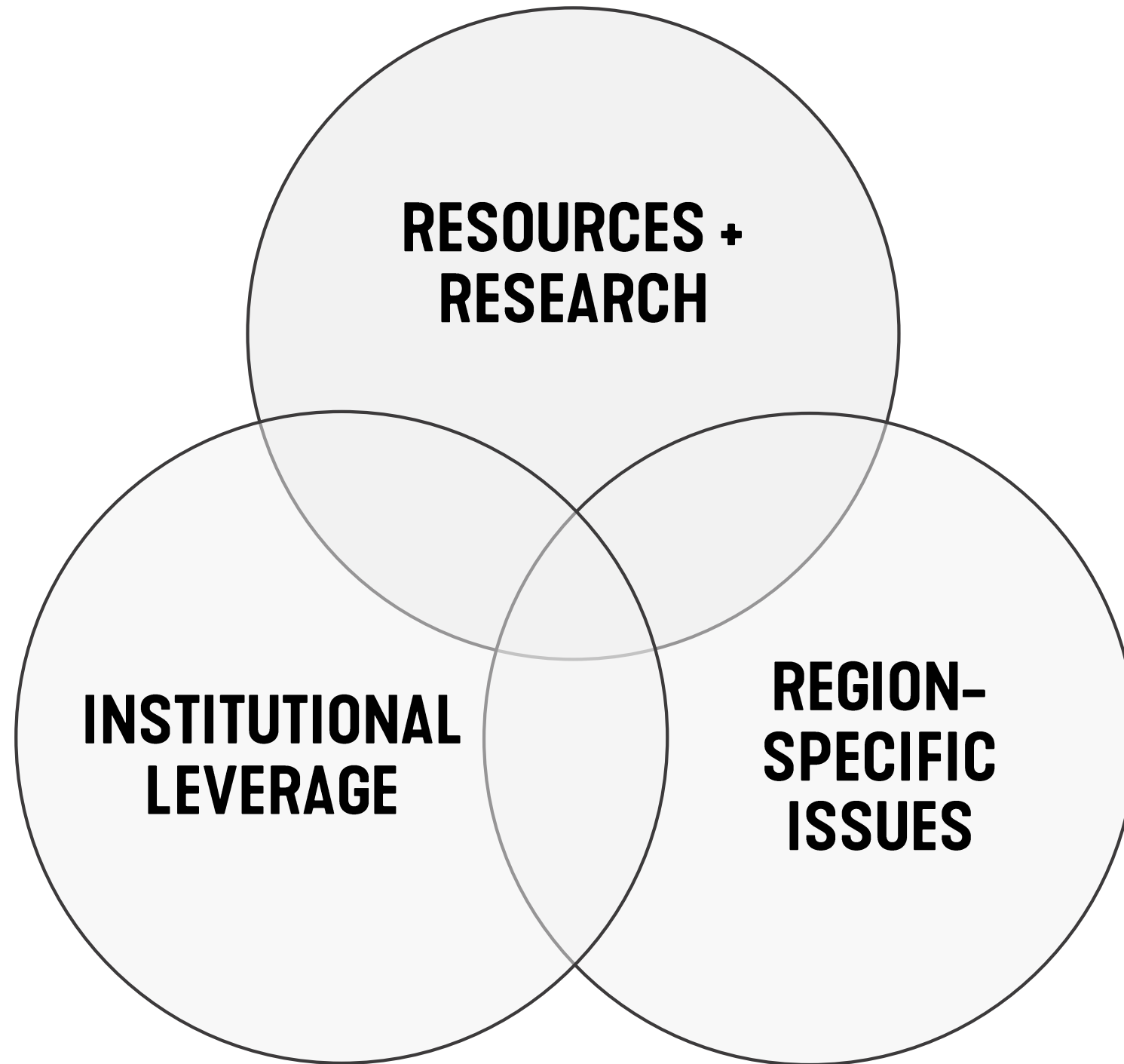




COLLABORATIVE MODELS TO SCALE UP CLIMATE ACTION AND RESILIENCY EFFORTS

SCUP54 | JULY 2019

WHY IS TOGETHER BETTER?



Universities working in tandem can share best practice, leverage scale, and increase influence to achieve **goals faster and more cost efficiently.**

TYPES OF HIGHER ED. CLIMATE COLLABORATIVES

City Partnerships



Formal partnerships with cities means that universities can advise city climate policy, and vice versa

State University Systems



State systems can leverage climate decisions under their brand, distributing policy to all connected campuses

Research + Resource



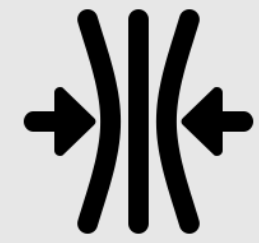
By conducting cross-university research efforts, universities can save both time and money

Networking + Storytelling



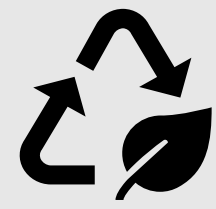
Storytelling networks can create large collaboratives that share ideas and best practice

Resiliency + Climate Adaption



Collaboratives focused on resiliency and climate adaptation work proactively, planning for future scenarios

Carbon Reduction + Offset



Collaboratives focused on carbon reduction and climate offsets work planning to offset present carbon emissions

UNIVERSITY OF CALIFORNIA SYSTEM

CLIMATE EDUCATION PARTNERS

ST. LOUIS REGIONAL HIGHER EDUCATION CLIMATE CONSORTIUM

STATE UNIVERSITY OF NEW YORK

CAMBRIDGE CLIMATE COALITION

BOSTON GREEN RIBBON COMMISSION

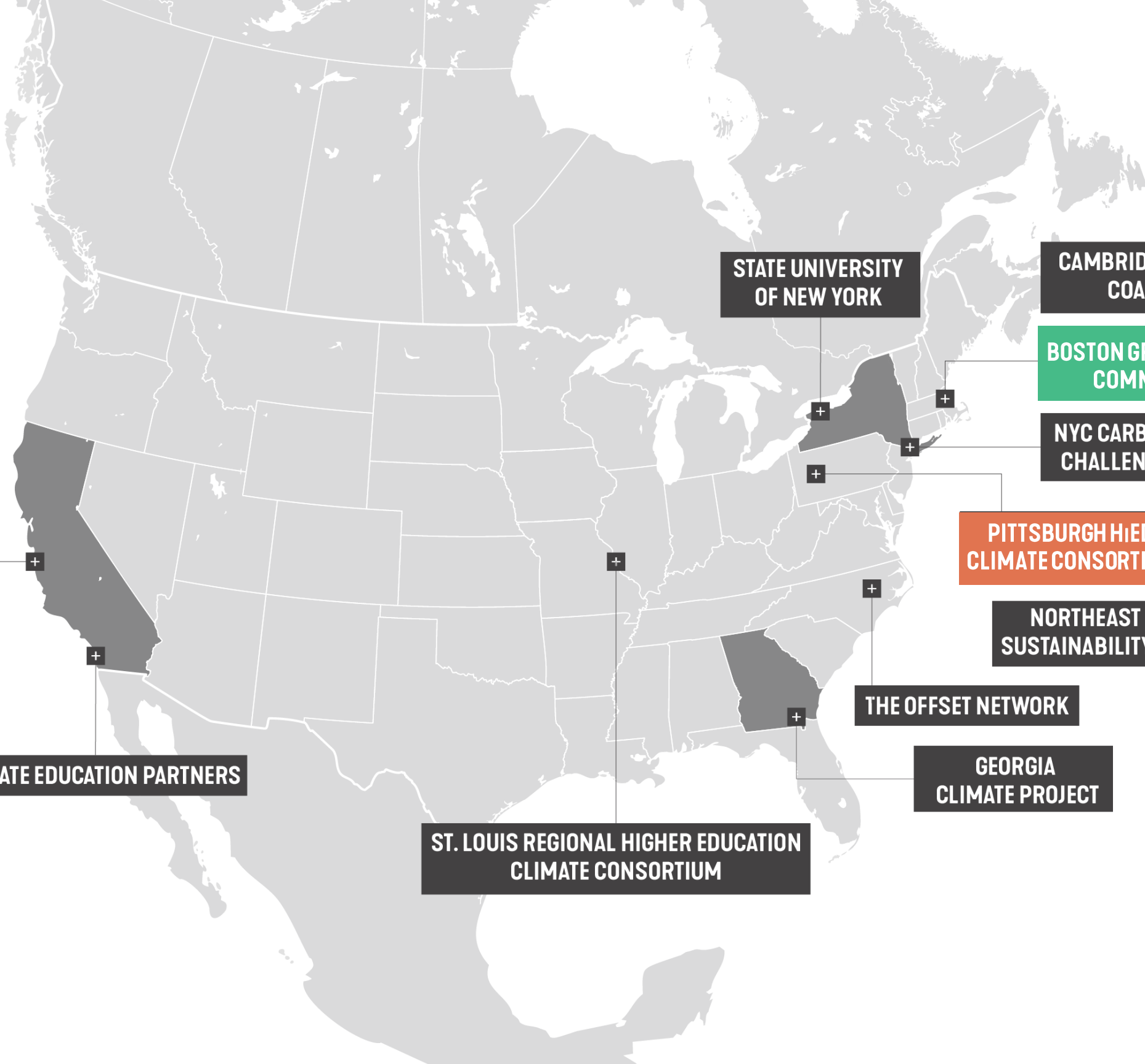
NYC CARBON CHALLENGE

PITTSBURGH HIED CLIMATE CONSORTIUM

NORTHEAST CAMPUS SUSTAINABILITY COALITION

THE OFFSET NETWORK

GEORGIA CLIMATE PROJECT



ST. LOUIS REGIONAL HIGHER EDUCATION SUSTAINABILITY CONSORTIUM (STL-HESC)

ST. LOUIS, MISSOURI



- Topics have included Consortium engagement with AASHE, networking with the Illinois Green Economy Network, and participation in Recyclemania. Semesterly coffee-talks address experiences like move-out, curriculum, and freshman orientation.

Winter 2016 | STL-HESC Campus Sustainability Newsletter

[View this email in your browser](#)

STL HIGHER ED SUSTAINABILITY CONSORTIUM

In this issue of the STL-HESC Campus Sustainability Newsletter we will be highlighting some of the fantastic upcoming events and learning opportunities to advance campus sustainability throughout the St. Louis region, including upcoming conferences, past workshops, and new projects underway. This newsletter highlights achievements, events, and programs that demonstrate the value, importance and benefits of greening our campus communities.

In this newsletter:

- [AASHE Updates](#)
- [Recap: 2016 AASHE Conference & Expo - "Beyond the Campus"](#)
- [Regional Collaborative Partners Team Up to Host 2017 Collaborative Sustainability Summit](#)
- [Battle for the Boot Returns](#)
- [Registration for 2017 RecycleMania Now Open](#)
- [Green Shadow Program Now Accepting Spring Applications](#)
- [MOAPPA Conference Save the Date and Call For Papers](#)
- [STL-HESC Congratulates Peggy on Retirement](#)
- [EarthWays Center Welcomes Simon](#)

Registration for 2017 RecycleMania Now Open

The 2017 RecycleMania competition is now open for registration. The competition will run from February 5th through April 1st with two Pre-Season weeks from January 22nd through February 4th. In addition, there will be a [Tios & Case Studies Examples for RecycleMania Outreach Webinar](#) on January 17th, as well as a [Primer: Rules & Tracking Requirements](#) on February 1st. [See below for details on registering](#)

1. Register New School
Your school has never participated in the Annual RecycleMania Tournament
Steps to complete your registration:

1. [Create an Account](#) in Re-TRAC Connect
2. [Login](#) to account you just created
3. Complete 2017 RecycleMania Profile Information form!

2. Existing School - Have Existing Re-TRAC Connect Account
If you know the email and password for your schools account.
Steps to complete your registration:

1. [Login](#) to existing account
2. Complete 2017 RecycleMania Profile Information form!

3. Existing School - New Contact - Do Not Have Re-TRAC Connect Account
You don't have access or don't know your schools username or password
Steps to complete your registration:

1. Send email to helpline@recyclemaniacs.org and we'll help get you started!

Regional Collaborative Partners Team Up to Host 2017 Collaborative Sustainability Summit

Sponsorship

Collaborative Sustainability Summit
SETTING TARGETS FOR OUR SHARED FUTURE
April 5, 2017 - Noon - 7:30 pm
Eric P. Newman Education Center
Washington University in St. Louis
www.onesstl.org

As a region, we have a robust foundation for sustainability; a strong, collectively developed regional sustainability plan (OneSTL), a thorough City of St. Louis Sustainability Plan, and a multitude of initiatives dedicated to making St. Louis a more sustainable and resilient place. This conference seeks to move these frameworks forward by identifying specific targets and goals that lead to strategies to achieve a sustainable, equitable future.

This effort builds on OneSTL, and other plans and studies conducted across the region. Your financial support will help to bring everyone together to define regional goals for the future.

Topics

- Buildings, Land Use, & Community Development
- Water & Green Infrastructure
- Materials & Recycling
- Energy & Emissions
- Transportation
- Biodiversity
- Food

Outcomes

- SMART (Specific, Measurable, Achievable, Relevant, time-bound) goals
- A report that can serve as a reference point for planners, government officials and other decision makers to review and evolve their plans and efforts
- Action and strategies for achieving the SMART goals

The conference will be followed by a day-long work session with regional experts and stakeholders to discuss and recommend a set of goals, targets and strategies. A report will be created that documents the identified SMART goals and will serve as a reference point to implement and update OneSTL as well as other plans and efforts.

Green Shadow Program Now Accepting Spring Applications

We are looking for Mentors and Shadows to participate in the Green Shadow program. Apply by February 28, 2016 to be matched in the Fall 2016 semester.

Green Shadow Mentor Program

Green Shadow is a mentorship program developed by the USGBC-Missouri Gateway Chapter Higher Education committee to expose students and emerging professionals to green jobs within the Missouri Gateway territory through a one-day shadow of local business people. Participating companies get access to local students interested in the industry without the financial commitment of an internship.

Mentors must have an active USGBC-Missouri Gateway Chapter membership and fill out an online application detailing their interest in becoming a Mentor and providing a list of activities in their typical



NYC CARBON CHALLENGE



Established in 2007, the challenge was designed for universities and hospitals to reduce city GHG emissions **80% by 2050** (from 2005 baseline)

17 NYC universities committed to building-based GHG reductions through tracking and optimizing



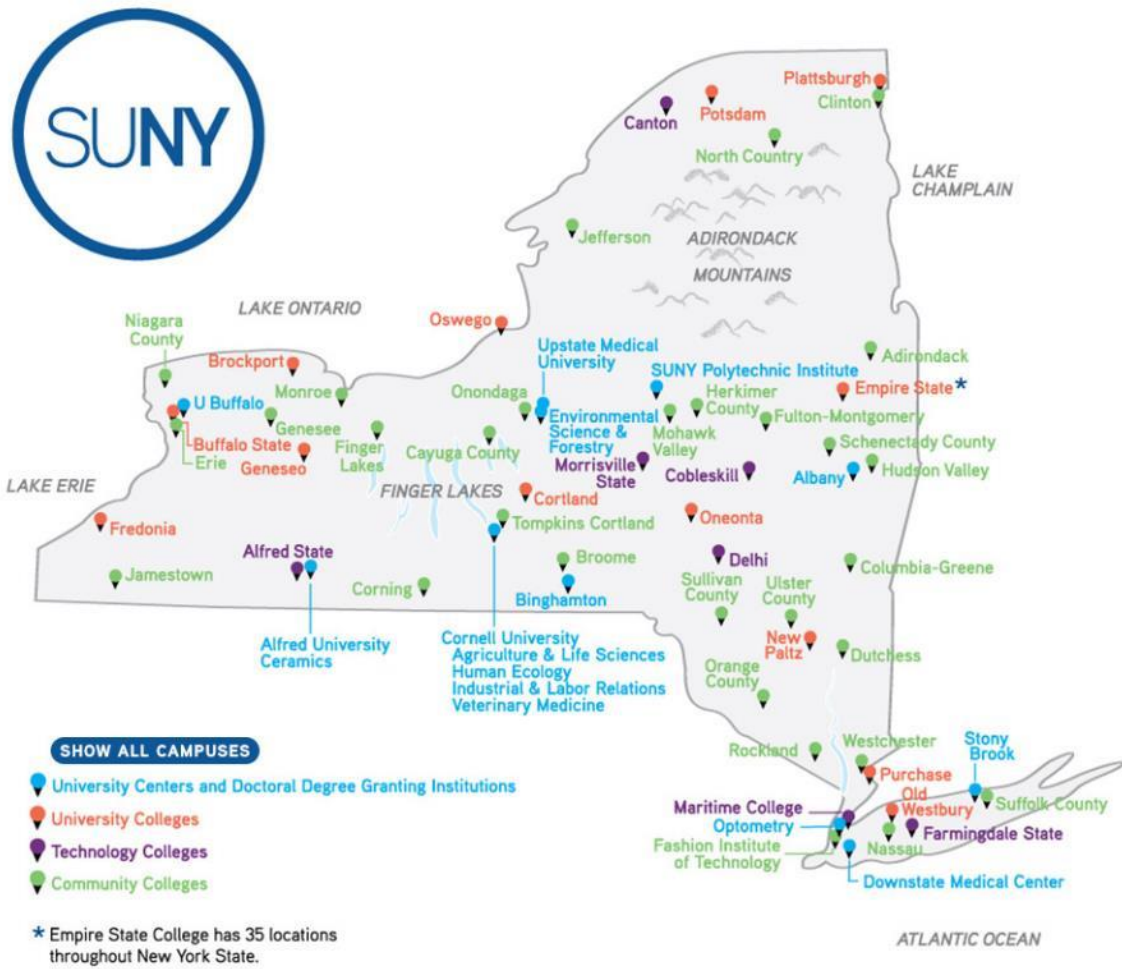
UC– Policy on Sustainable Practices text components:

- Green Building Design
- Clean Energy
- Climate Protection
- Sustainable Transportation
- Sustainable Building Operations for Campuses
- Zero Waste
- Sustainable Procurement
- Sustainable Foodservices
- Sustainable Water Systems
- Sustainability at UC Health

“The University of California is committed to responsible stewardship of resources and to demonstrating leadership in sustainable business practices. The University’s locations should be living laboratories for sustainability, contributing to the research and educational mission of the University”

STATE UNIVERSITY OF NEW YORK

64 campuses, altogether one of the state’s largest energy consumers



ENERGY

Reduce SUNY’s energy consumption by 30% by 2020

Brownfield to Brightfield: a project exploring placement of renewable energy installations on EPA brownfield sites

FOOD

“SUNY Commits” to NY State Agriculture, an initiative intended to increase the quantity of local food procurement

Funded by the American Farm Trust’s Farm to Institution NYS Initiative

SUSTAINABILITY BENCHMARKING

A workbook intended to implement a set of tiered guidelines for SUNY dining and retail purchasing

GEORGIA CLIMATE PROJECT



The Georgia Climate Project is building a network of experts across the state to advance four strategic priorities.



Science

Synthesizing what is known and analyzing what is not in order to improve understanding of climate impacts and solutions in Georgia.

[Learn more >](#)



Stronger conversations

Fostering a constructive, nonpartisan discussion about how climate change affects Georgia and what can be done about it.

[Learn more >](#)



Solutions

Working with partners to enable Georgians to take practical steps to respond to climate change and its impacts.

[Learn more >](#)



Stronger network

Bringing together experts working to understand and act on climate.

[Learn more >](#)

Founding partners



Academic partners



CLIMATE EDUCATION PARTNERS

SAN DIEGO, CA



San Diego, 2050 Is Calling.
HOW WILL WE ANSWER?



FACING THE FUTURE:
How Science Can Help Prepare San Diego Regional Leaders For Climate Change

WHY 2050?



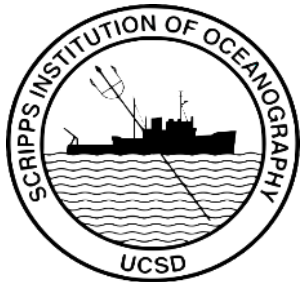
COASTAL FLOODING

To address more frequent and widespread coastal flooding, we can use smart infrastructure and natural buffers to safeguard residents and businesses.

Discover More >

San Diego research and higher education institutions partnering to **educate San Diego leaders about climate change and its effect on the region’s quality of life**

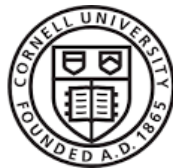
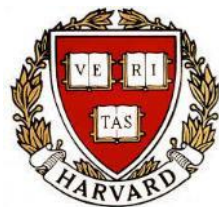
The coalition collects climate data, develops educational materials for community members, and models regional climate collaboration for replication by other communities



THE NORTHEAST CAMPUS SUSTAINABILITY CONSORTIUM (NECSC)



A network of sustainability officers committed to meeting annually to advance education related to sustainability in higher education



Cornell University



PRINCETON UNIVERSITY



COLUMBIA UNIVERSITY



Carnegie Mellon University



Massachusetts Institute of Technology



BROWN

Conference History

Since 2004, NECSC steering committee members have committed to hosting annual gatherings. As planning continues for the next 10 years, additional host institutions will emerge.

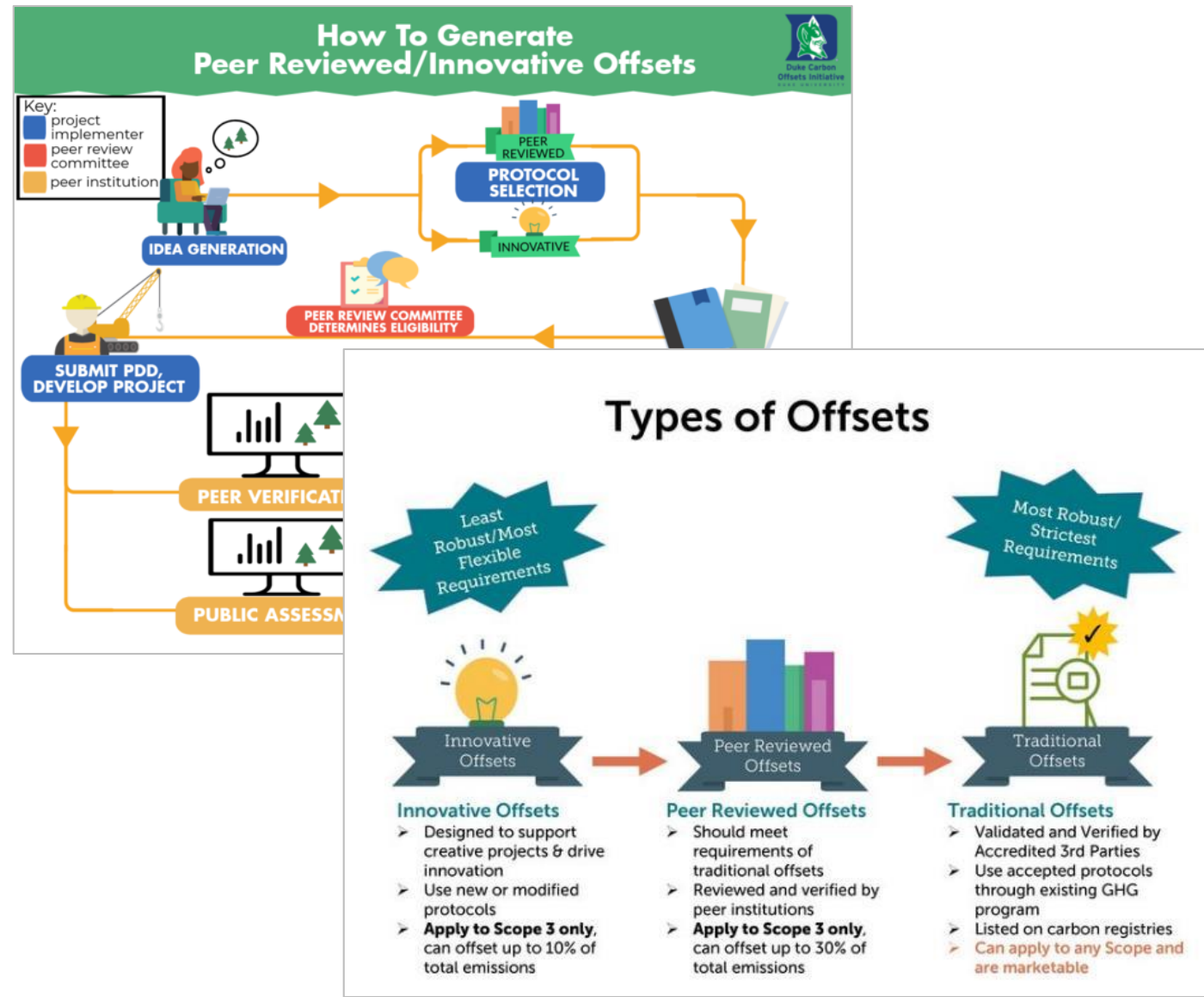
2004	New Hampshire	2013	Maryland
2005	Massachusetts (Harvard)	2014	Rhode Island (Brown University)
2006	Connecticut	2015	Massachusetts (University of Massachusetts)
2007	Maine (Bowdoin College)	2016	Massachusetts (Wellesley College and Babson College)
2008	New Jersey (Princeton)	2017	New Hampshire (Dartmouth College)
2009	Vermont (Middlebury and the University of Vermont)	2018	Connecticut (Wesleyan University)
2010	Montreal (McGill University)	2019	Maine (University of Southern Maine)
2011	Pennsylvania (Carnegie Mellon)	2020	Montreal (McGill University)
2012	New York (Syracuse University)		

THE OFFSET NETWORK



A coalition of partners dedicated to sharing and creating **high quality resources, templates, and peer evaluation** for institutions interested in implementing carbon offset plans, especially for Scope 3 emissions

EXAMPLE GUIDES FROM THE OFFSET NETWORK



CLIMATE RESILIENCE IN URBAN CAMPUSES AND COMMUNITIES (CRUX)



Multi-city partnership supported by a Kresge Foundation grant

Project goals include

- Implementing a **nationally-scalable strategy for climate resiliency** in communities and campuses
- Learning with and from the partners as they complete benchmarking by **creating a campus/community task force, and completing a resilience capacity assessment**

Partners

Institutions participating in CRUX include:

Los Angeles

- California State University, Northridge
- Los Angeles Valley College
- Northridge Vision
- Greater Valley Glen Neighborhood Council

Phoenix

- Arizona State University
- South Mountain Community College
- Habitat for Humanity Central Arizona

Portland

- Portland State University
- Mt. Hood Community College
- Portland Downtown Neighborhood Association
- City of Gresham
- City of Portland Bureau of Planning and Sustainability

Student Opportunities ›
Faculty Opportunities ›
Free xChange ›
Eco-Reps ›
Green Devil Certification ›
EcoLeague ›

- Consortium for Sustainability
- EcoLeague Resources for Faculty

CONSORTIUM FOR SUSTAINABILITY



EcoLeague consortium members include:

- Alaska Pacific University,
- College of the Atlantic,
- Dickinson College,
- New College of Florida,
- Northland College, and
- Prescott College.

WHAT IS THE ECOLEAGUE?


The EcoLeague is the only college consortium in the United States dedicated to sustainability education and the active pursuit of environmental studies within a liberal-arts framework. Dickinson was inducted into the 12-year-old multischool consortium in 2014.

UNIVERSITY OF CALIFORNIA SYSTEM



10 campuses
committed to the
**UC – Policy on
Sustainable
Practices**

University of California – Policy on Sustainable Practices



Sustainable Practices

Responsible Officer:	EVP – Chief Operating Officer
Responsible Office:	ES – Energy & Sustainability
Issuance Date:	7/1/2004
Effective Date:	8/10/2018
Last Review Date:	1/30/2018
Scope:	All Campuses, Health Locations, and the Lawrence Berkeley National Laboratory

Contact: Matthew St. Clair

Title: Director of Sustainability, UCOP

Email: Matthew.StClair@ucop.edu

Phone: (510) 287-3897

TABLE OF CONTENTS

I. POLICY SUMMARY	2
II. DEFINITIONS	2
III. POLICY TEXT	8
A. Green Building Design	8
B. Clean Energy	9
C. Climate Protection	10
D. Sustainable Transportation	11
E. Sustainable Building Operations for Campuses	11
F. Zero Waste	12
G. Sustainable Procurement	12
H. Sustainable Foodservices	15
I. Sustainable Water Systems	16
J. Sustainability at UC Health	16
IV. COMPLIANCE/RESPONSIBILITIES	17
V. PROCEDURES	18
VI. RELATED INFORMATION	35
VII. FREQUENTLY ASKED QUESTIONS	35
VIII. REVISION HISTORY	35

1 of 36

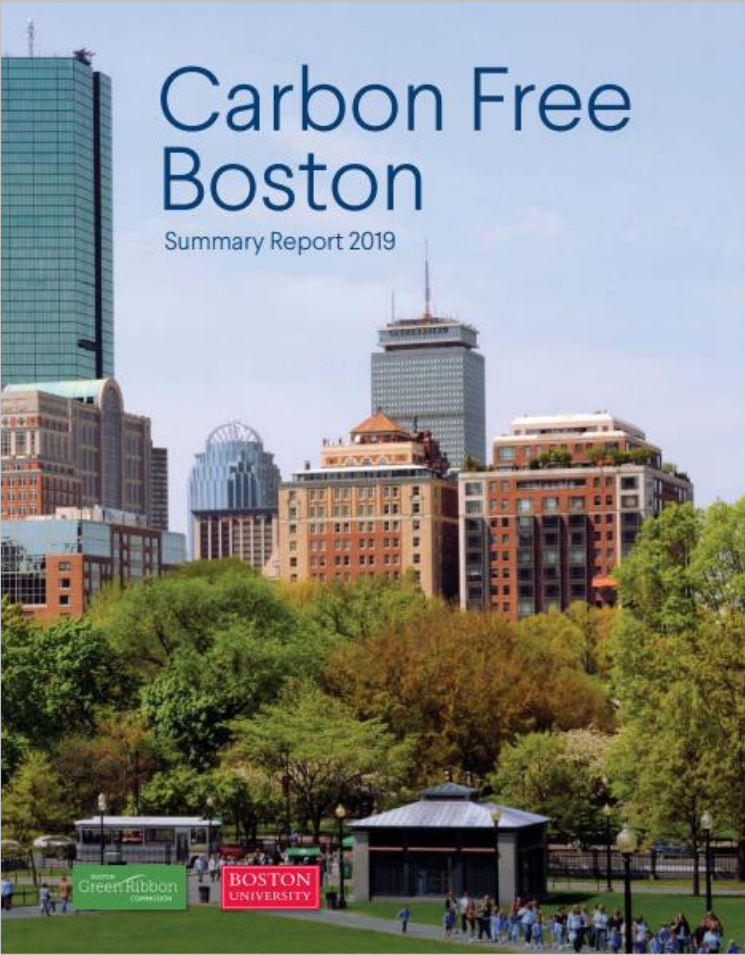


BOSTON GREEN RIBBON COMMISSION

BOSTON, MASSACHUSETTS



CITY of BOSTON



Carbon Free Boston

Summary Report 2019

Dear Mayor Walsh,

On behalf of the Boston Green Ribbon Commission (GRC) and its Carbon Free Boston Working Group, we are honored to present you with our Carbon Free Boston report. This report quantifies the most effective combinations of strategies to reduce greenhouse gas emissions across our energy, buildings, transportation, and waste sectors. It is intended to provide an analytical framework for the City of Boston and its key stakeholders to use in making choices about which specific strategies and policies to pursue to achieve the goal of being carbon neutral by 2050.


The good news is that by taking ambitious steps to reduce its greenhouse gas emissions, the City of Boston can also improve the quality of life for its residents – reduce congestion, make our streets safer, improve transit access, create more green space, reduce noise and air pollution and improve public health. We are proud to note that our Carbon Free Boston report explicitly addresses the potential impacts of different policies on social equity and acknowledges that socially just solutions are as important as technically efficient solutions.

In 2016 you signed the Metro Mayors Climate Mitigation Commitment, committing the City of Boston to achieving carbon neutrality by 2050. In that same year, you asked the Green Ribbon Commission to establish a Working Group to support the City in the development of strategies to achieve those ambitious targets. In response, we set up the Carbon Free Boston Working Group, comprising GRC members and other leaders in the energy, finance, and communications sectors. We subsequently partnered with Boston University's Institute for Sustainable Energy (ISE) to develop a sophisticated analytical platform to assess the impact of a broad range of strategies and policies on the City's emissions. The Boston University team worked with a team of consultants and five different Advisory Groups representing more than 120 experts in the fields of energy, transportation, buildings, waste and social equity. These experts came from a wide variety of organizations, including city and state government, regional planning organizations, non-profits, higher education, health care, commercial real estate and private business.

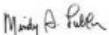
The report's analysis makes clear the great magnitude of the change needed to achieve carbon neutrality. It requires an electricity grid that is powered by renewable sources of energy and a large-scale reduction in the use of oil and natural gas for transportation, space heating and hot water. It requires immediate and dramatic efforts to make buildings more energy efficient. It entails replacing travel in personal vehicles with greater use of public transportation, cycling and walking, while eliminating the use of internal combustion engines for remaining vehicles. And it necessitates sending zero-waste to landfills and incinerators. These necessary achievements will require innovation and transformation in our city's core systems. And we will need to make these changes in a way that is cost effective, that equitably distributes benefits and burdens, and that does not unduly disrupt ongoing operations.

We know that the delivery of this report is just one step on the City's road to carbon neutrality. As your administration translates this analysis into concrete implementation strategies, the members of the GRC stand with you to provide support and expertise, to test concepts and help scale those that make sense for the City, and to reach deep into our sectors to muster support for the transition that you will lead. Please call on us. We look forward to continuing our deep and productive partnership as Boston moves toward carbon neutrality.

Sincerely,

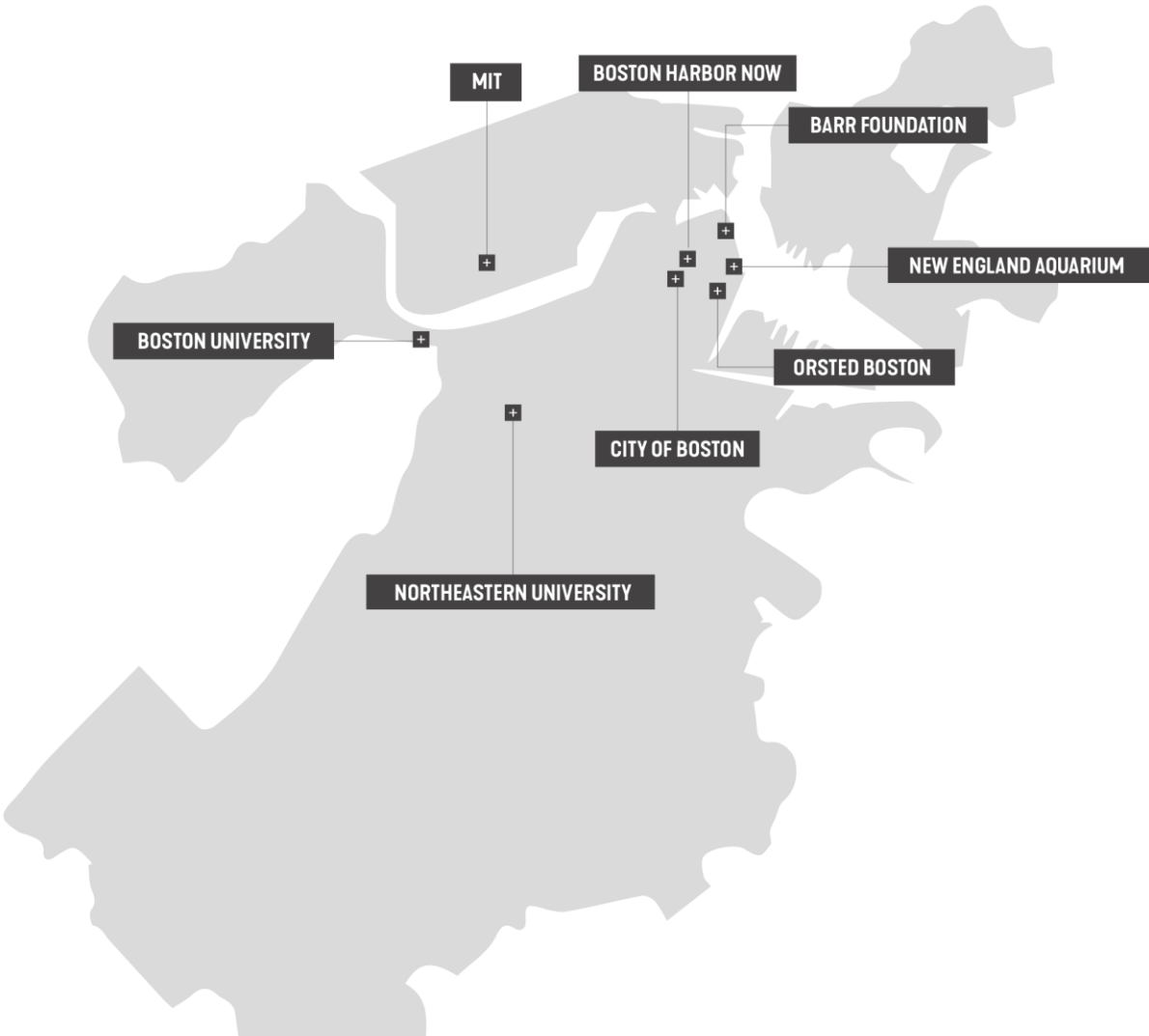


Amos B. Hostetter, Jr.
Co-Chair, Boston Green Ribbon Commission
and Trustee, Barr Foundation



Mindy Lubber
Vice Chair, Boston Green Ribbon Commission
and CEO & President, Ceres

Businesses, institutions, and civic leaders reporting and sharing climate action strategies aligning with the City's Climate Action Plan



HIGHER ED CLIMATE CONSORTIUM CITY OF PITTSBURGH



HECC MISSION:

REDUCE THE GHG OF PITTSBURGH

...by actively engaging all Pittsburgh region colleges and universities to:

1. COLLABORATE,
2. SHARE INFORMATION, AND
3. SET GOALS REGARDING:
 - research agenda
 - education curricula,
 - operations,
 - outreach activities, and
 - commitments that reduce GHG emissions

